



Technical drawing of a mobile crane, showing the main structure and various dimensions. The crane is yellow and features a lattice boom. Key dimensions and load capacities are indicated:

- Boom Dimensions:**
 - Top section: 5,9 m
 - Middle section: 26 m, 12 t
 - Bottom section: 60 m, 5 t
- Counterweight Dimensions:**
 - Top counterweight: 50 m, 8,5 t
 - Middle counterweight: 40 m, 11,3 t
 - Bottom counterweight: 30 m, 15,6 t
- Crane Dimensions:**
 - Height: 12,9 m
 - Width: 1,4 m
 - Base width: 9,5 m
- Base Dimensions:**
 - Base width: 2,45 m x 2,45 m
 - Base length: 6 x 6 m
 - Base length: 8 x 8 m
 - Base length: 10 x 10 m





MAE 6

A vertical line with arrows at both ends, labeled H in the middle. At the top end, there is a red circle with a cross inside. At the bottom end, there is a horizontal line segment representing a ground surface.

4  $H = H_4$

A diagram showing a vertical column of height H . At the top of the column is a circular cross-section, represented by a circle with an 'X' inside. A vertical double-headed arrow indicates the height H from the base to the top of the column.

A diagram showing a vertical column of height H . At the top of the column is a circular cross-section, represented by a circle with an 'X' inside. The height H is indicated by a vertical double-headed arrow to the left of the column.

MR 415 H24



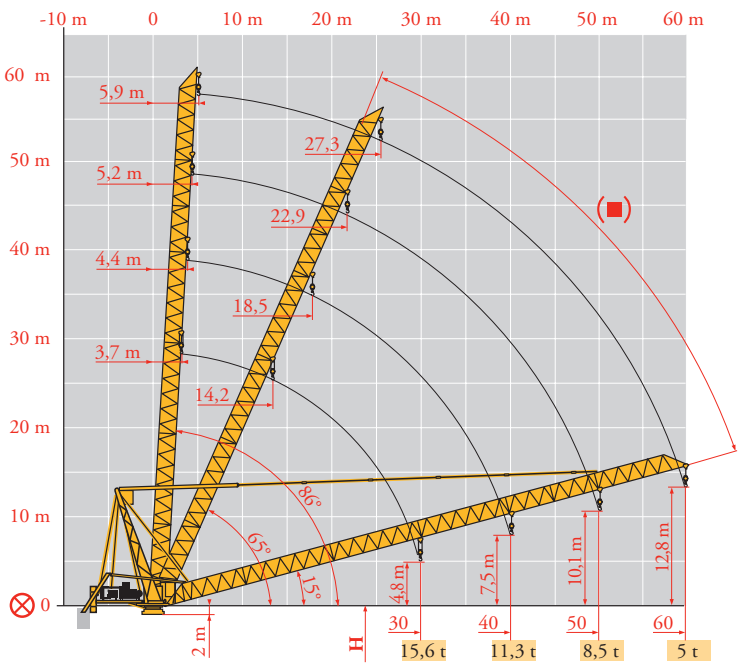
Courbes de charges
Lastkurven
Load diagrams
Curvas de cargas
Curve di carico
Curva de cargas
Диаграммы
грузоподъемностей

MAE 3

60 m	5,9	▶							26	28	30	35	40	45	50	55	60 m		
▼									12	11,4	10,6	9	7,8	6,9	6,1	5,5	5 t		
50 m	5,2	▶							23,6	24	25	26	28	30	35	36,1	40	45	50 m
U									18	17,7	17	16,3	15	13,9	11,8	-	10,2	8,9	7,9 t
↓																12	10,8	9,5	8,5 t
40 m	4,4	▶							18,8	20	22	24	25	26	28	30	35	37,8	40 m
U									24	22,6	20,4	18,6	17,8	17,1	15,8	14,7	12,4	-	10,7 t
↓																	12	11,3	t
30 m	3,7	▶							20	22	24	25	26	28	30 m				
U									24	21,7	19,8	19	18,2	16,8	15,6	t			
↓																	12	t	

Flèche relevée
Ausleger in Steilstellung
Luffing jib
Flecha izada
Braccio impennato
Lança inclinada
Маховая стрела

MAE 3



⊗	FR	DE	EN	ES	IT	PT	RU
⊗	Axe articulation flèche	Ausleger-gelenkachse	Jib hinge shaft	Eje articulación de flecha	Asse cerniera braccio	Eixo de articulação da lança	Ось шарнира стрелы
■	Position girouette	Windfreistellung	Weathervaning position	Posición eleta	Libera rotazione	Posição em catavento	Флюгирование



Mécanismes
Antriebe
Mechanisms
Mecanismos
Meccanismi
Mecanismos
Механизмы

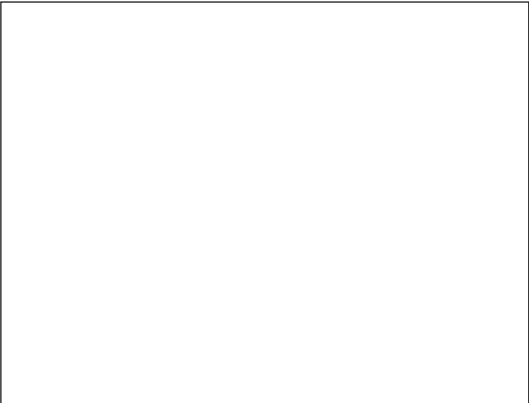
MAE 6

MR 415 H24 - 50 Hz											ch - PS hp	kW	
	180 LBR 120 L 580	m/min	5,3/53	8,4/84	13,5/135	21,4/214	2,6/26	4,2/42	6,7/67	10,7/107	180	132	
		t	12	7,3	4,3	2,35	24	15	8,9	5			580 m
	124 VBR	tr/min U/min - rpm	1 min 31 s								125	90	
	R - 8,8	m/min	0 0,67								2 x 6	2 x 4,4	
	Y 800 A RT584 A1 - 2V	m/min	13,5 - 27								8 x 7	8 x 5,2	
	J 850 A												
	ZX 6830 RT 664 A2B - 2V	m/min	16 - 32								6 x 7	6 x 5,2	
CEI 38		IEC 38	400 V (+6% -10%)				kVA	300 kVA					

MR 415 H24 - 60 Hz											ch - PS hp	kW	
	215 LBR 120 L 580	m/min	6,3/63	10/100	16/162	26/256	3,1/31	5/50	8/81	13/128	215	158	
		t	12	7,3	4,3	2,35	24	15	8,9	5			580 m
	150 VBR	tr/min U/min - rpm	1 min 16 s								148	108	
	R - 10,5	m/min	0 0,8								2 x 7,2	2 x 5,3	
	Y 800 A RT584 A1 - 2V	m/min	16 - 32								8 x 8,4	8 x 6,2	
	J 850 A												
	ZX 6830 RT 664 A2B - 2V	m/min	19 - 38								6 x 8,4	6 x 6,2	
CEI 38		IEC 38	480 V (+6% -10%)				kVA	350 kVA					

FR	DE	EN	ES	IT	PT	RU
Levage	Heben	Hoisting	Elevación	Sollevamento	Elevação	Подъем
Distribution	Katzfahren	Trolleying	Distribución	Distribuzione	Distribuição	Перемещение каретки
Orientation	Schwenken	Slewing	Orientación	Rotazione	Rotação	Поворот
Translation	Kranfahren	Travelling	Traslación	Traslazione	Translação	Перемещение крана

	Document commercial non contractuel. Pour toute information technique se référer à la notice correspondante.	Unverbindliches Vertriebsdokument. Für technische Informationen, siehe die entsprechenden Anweisungen.	This commercial document is not legally binding. For any technical information, please refer to the corresponding instructions.	Documento commercial no contractual. Para cualquier información técnica, ver la noticia correspondiente.	Documento commerciale non vincolante, per tutte le informazioni tecniche fare riferimento al catalogo istruzioni.	Documento comercial não contratual. Para qualquer informação técnica complementar consultar as respectivas instruções.	Этот коммерческий документ не является юридически обязательным. Для получения технической информации, см. соответствующие инструкции.
--	--	--	---	--	---	--	---



MR 415 H24



Manitowoc - Americas - World Headquarters
2400 S. 44th Street • Manitowoc • WI 54220 USA
Tel: +1 920 684 4410 • Fax: +1 920 652 9778

Manitowoc - Europe, Middle East & Africa
Manitowoc France SAS
18, rue de Charbonnières B.P. 173 • 69132 ECULLY Cedex • FRANCE
Tel: +33 (0)4 72 18 20 20 • Fax: +33 (0)4 72 18 20 00

Manitowoc - Asia Pacific
16F Xu Hui Yuan Building,
1089 Zhongshan No.2 Road (S) • Shanghai 200030 China
Tel: +86 21 6457 0066 • Fax: +86 21 6457 4955

Réf. 200349 MAE7